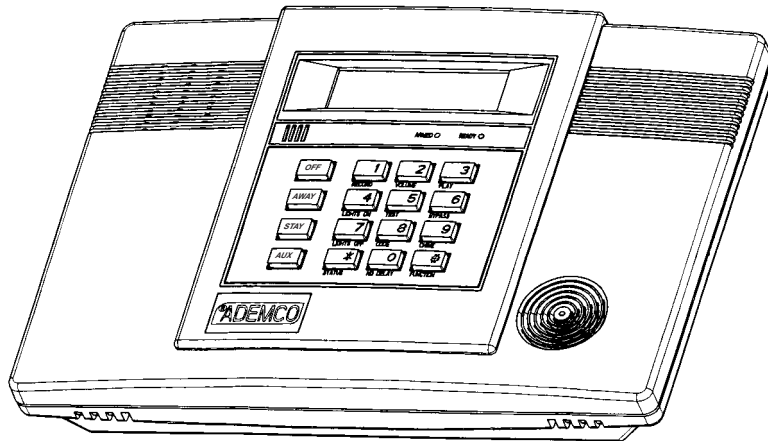


LYNX

Security System

User's Manual

ALPHA DRAFT
June 5, 1998



N8891 5/98

® ADEMCO

TABLE OF CONTENTS

SYSTEM OVERVIEW	3
Features.....	3
General Operation.....	4
Quick View of System Functions.....	5
About the Master Keypad.....	6
About the Display and Indicators.....	7
Master Keypad Definitions.....	8
SECURING THE PREMISES	10
Checking System Status.....	10
Arming the System.....	11
Entry/Exit Delays.....	13
Disarming the System.....	14
Bypassing Protection Zones.....	15
Panic Keys / Chime Mode.....	16
USER FUNCTIONS	17
Paging Feature.....	17
Using Device Commands.....	18
Message Recording/Playback.....	19
Aux Function.....	20
Clock/Calendar.....	21
FIRE ALARM SYSTEM	22
General Information.....	22
National Fire Protection Association’s Smoke Detector Recommendations.....	23
Emergency Evacuation.....	24
SYSTEM FUNCTIONS	25
Security Codes.....	25
Testing the System.....	26
Trouble Messages.....	27
Maintaining Your System.....	28
SUMMARY OF AUDIBLE NOTIFICATION	29
FCC STATEMENTS	30
OWNER’S INSURANCE PREMIUM CREDIT REQUEST	33
LIMITATIONS OF THIS ALARM SYSTEM	35
ONE YEAR WARRANTY	36

Congratulations on your ownership of an ADEMCO Security System. You have made a wise decision in choosing it, for it represents the latest in security protection technology today. ADEMCO is the world's largest manufacturer of security systems, and millions of premises are protected by ADEMCO products.

SYSTEM OVERVIEW

Features

General Information

This system offers you three forms of protection: burglary, fire, and emergency, depending on the configuration of your system. The system consists of a master keypad for controlling system operation, various wireless sensors which provide perimeter and interior burglary protection, and optional smoke or combustion detectors to provide early fire warning. In addition, optional wireless keypads may have been installed to allow you to control the system away from the master keypad.

The system uses microcomputer technology to monitor all protection zones and system status, display appropriate information on the keypad display, and initiate appropriate alarms. Your system may also have been programmed to automatically send alarm or status messages over the phone lines to a central alarm monitoring station.

The user features of this security system are listed below. Ask your installer which features have been programmed for your system.

- **STAY and AWAY arming modes:** You can protect either the perimeter only, or the entire premises.
- **3 panic key functions:** Designated keys allow you to manually activate fire, personal emergency, or silent alarms. Refer to the *PANIC KEYS* section for detailed information.
- **Paging feature:** Alerts you to certain system conditions by displaying code numbers that indicate the type of condition that has occurred. In addition, pressing the AUX key can send a predefined message to your pager, if programmed to do so (see AUX key function below). Refer to the *PAGING FEATURE* section for detailed information.
- **Real-time clock:** Keypad displays current time. Refer to the *CLOCK/CALENDAR* section for procedures for setting the time.
- **Voice announcement of system status:** The master keypad's built-in speaker announces system status at the press of a key. Refer to the *CHECKING SYSTEM STATUS* section for details.
- **Message center:** The system allows recording and play back of brief messages. Refer to the *RECORDING/PLAYBACK MESSAGES* section for procedures.
- **Device activation:** Designated keys allow you to turn lights and/or other devices on and off. In addition, some devices (e.g., a light) may be programmed to activate automatically as a result of a system event such as an alarm or trouble condition. Refer to the *USING DEVICE COMMANDS* section for detailed information.
- **AUX key function:** Designated key lets you activate a predefined series of keystrokes with a single press of the **AUX** key, if programmed to do so (see Paging feature above). Refer to the *AUX FUNCTION* section for detailed information.

SYSTEM OVERVIEW

General Operation

Zones

Your system's sensing devices have been assigned to various "zones." For example, the sensing device on your entry/exit door may have been assigned to zone 01, sensing devices on windows in the master bedroom to zone 02, and so on. These numbers appear on the display when an alarm or trouble condition occurs.

Fire Protection

The fire protection portion of your security system (if used) is always active and will sound an alarm if a fire condition is detected. Refer to the *FIRE ALARM SYSTEM* section for important information concerning fire protection, smoke detectors and planning emergency exit routes from the premises.

Burglary Protection

Your system provides two modes of burglary protection: STAY and AWAY. STAY mode protects the perimeter only, allowing you to freely move within inside the premises. AWAY mode protects the entire system. Both modes provide an entry delay time that allows you to reenter the premises without setting off an alarm. For additional security, you can turn the entry delay off when arming the system by using the **NO DELAY** key in combination with the desired arming key. The system also allows you to bypass selected zones while leaving the rest of the system armed, if desired. Refer to the *BYPASSING PROTECTION ZONES* section. The system also provides a CHIME mode, for alerting users to the opening of protected doors and windows while the system is disarmed.

You must turn on ("arm") the burglary protection portion of your system before it will sense burglary alarms. To arm the system, enter your security code then press the desired arming key (AWAY or STAY). Refer to the *ARMING THE SYSTEM* section for detailed procedures and information.

Security Codes

At the time of installation, you were assigned a personal 4-digit security code. You must enter the security code when arming and disarming the system, and when performing other system functions. As an additional security feature, other users who do not need to know your code can be assigned up to 6 different security codes. Refer to the *SECURITY CODES* section for procedures on adding security codes to the system.

Alarms

When an alarm occurs, the keypad and sounders will sound, and the keypad will display the zone(s) causing the alarm. If your system is connected to a central monitoring station, an alarm message will be sent. To stop the alarm sounding, simply disarm the system. The zone(s) causing the alarm remain displayed indicating memory of alarm. Refer to the *DISARMING THE SYSTEM* section for information about clearing the memory of alarm display.

SYSTEM OVERVIEW

Quick View of System Functions

NOTE: = Empty boxes represent your security code.

SECURITY FUNCTIONS

- Checking system status: -----
- To arm in STAY mode: ----- ** + (empty boxes represent your security code)
- To restart exit delay: ----- (applies only if system is armed in Stay mode)
- To arm in AWAY mode: ----- ** +
- To arm with NO DELAY: ----- ** + or +
- To arm if Quick Arm is active: ----- or (hold down for at least 2 seconds)
- To disarm the system and silence alarms: ----- +
- To bypass a zone(s): ----- + + 2-digit zone number(s)
- To turn Chime mode on or off: ----- +

** Security code is not used if Quick Arm is active. Instead, press and hold down the or key.

MESSAGE CENTER

- To record a message: ----- +
- To stop recording before end of 20 seconds: ---
- To play back a message: ----- +
- To adjust message playback volume: ----- + + [3] or [6]
- To mute system announcements: ----- + +
- To restore announcement sounding: ----- + + [3] or [6]
- To set the time and date: ----- + + [63]

OTHER FUNCTIONS

- To activate or deactivate devices 1-6: ----- + or + device number
- To activate or deactivate devices 7 & 8: ----- + [#] + or + dev. no.
- To add a user code: ----- + + user number + user's code
- To delete a user code (except Master Code): -- + + user number
- To turn Test mode on: ----- +
- To turn Test mode off: ----- +
- To use the defined AUX function: ----- Press and hold key 2 secs (4 beeps) +
- To send message to pager: ----- Press and hold key 2 seconds (4 beeps)

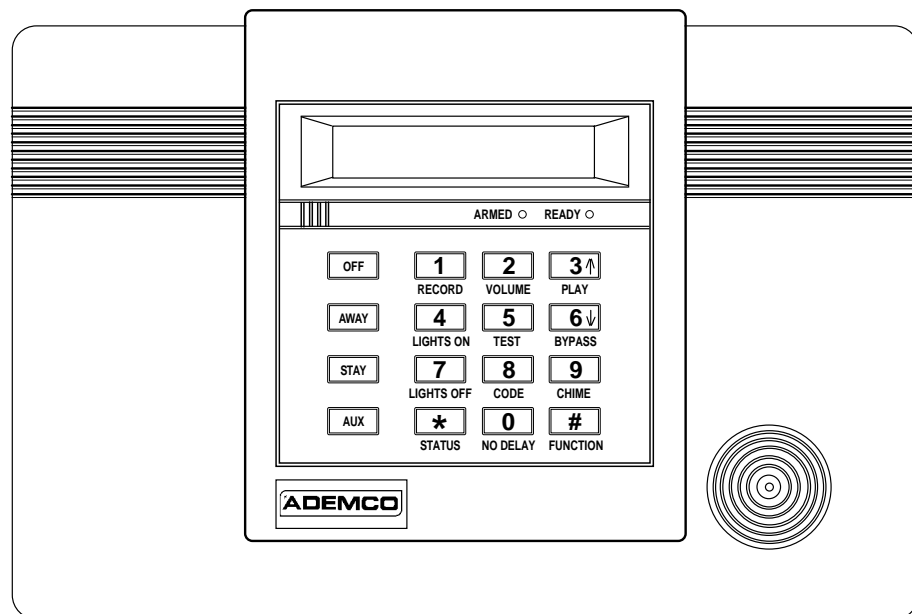
SYSTEM OVERVIEW

About the Master Keypad

General

IMPORTANT: If the keypad beeps rapidly upon entering the premises, an alarm has occurred during your absence and an intruder may still be on the premises. **LEAVE IMMEDIATELY** and **CONTACT THE POLICE** from a nearby safe location.

The keypad allows you to control all system functions. The keypad features telephone-style keys and a Liquid Crystal Display (LCD) which shows the nature and location of all occurrences.




The keypad also features a built-in sounder which will sound during alarms and troubles. The keypad also "beeps" during certain system functions, such as during entry/exit delay times, in Chime mode, and when depressing any of the keys (to acknowledge the key press). In addition, a built-in speaker announces system status.

SYSTEM OVERVIEW

About the Display and Indicators

Display Definitions

ALARM:	Appears when an intrusion has been detected and the system is armed (also appears during a fire alarm or audible emergency alarm). Accompanied by the protection zone in alarm.	
AWAY:	All burglary zones, interior and perimeter, are armed.	
INSTANT:	Perimeter burglary zones are armed and entry delay is turned off.	
STAY:	Perimeter burglary zones, such as protected windows and doors, are armed.	
FIRE:	Appears when a fire alarm or fire fault is present. Accompanied by a display of the zone in alarm.	
LOW BAT:	Low battery condition in a wireless sensor (if zone number is displayed) or low system battery (if no zone number is displayed). If 00 is displayed, a wireless keypad (5827/5827BD) has a low battery condition.	
AC:	Appears when AC power is present. If not lit, the system is operating on backup battery power.	
CHIME:	Appears when the Chime feature is activated.	
TEST:	Appears when the system is in Test mode.	
REC:	Appears when in Recording mode.	
MESSAGE:	Appears when a message has been recorded and has not yet been played back.	
BYPASS:	One or more burglary protection zones have been bypassed.	
FAULT:	Appears when a malfunction is discovered in the system at any time; or if an open is detected in a fire zone at any time; or when a fault in a day/night burglary zone is discovered during a disarmed period. Accompanied by a display of the zone number in trouble.	

LED Meanings

ARMED (Red) LED:	ON = System armed OFF = System disarmed Blinking = System armed, but a fault exists
READY (Green) LED:	ON = System disarmed, ready to arm Blinking = System disarmed, not ready to arm (a fault exists)
	NOTE: When the system is armed, the READY LED turns off.

SYSTEM OVERVIEW

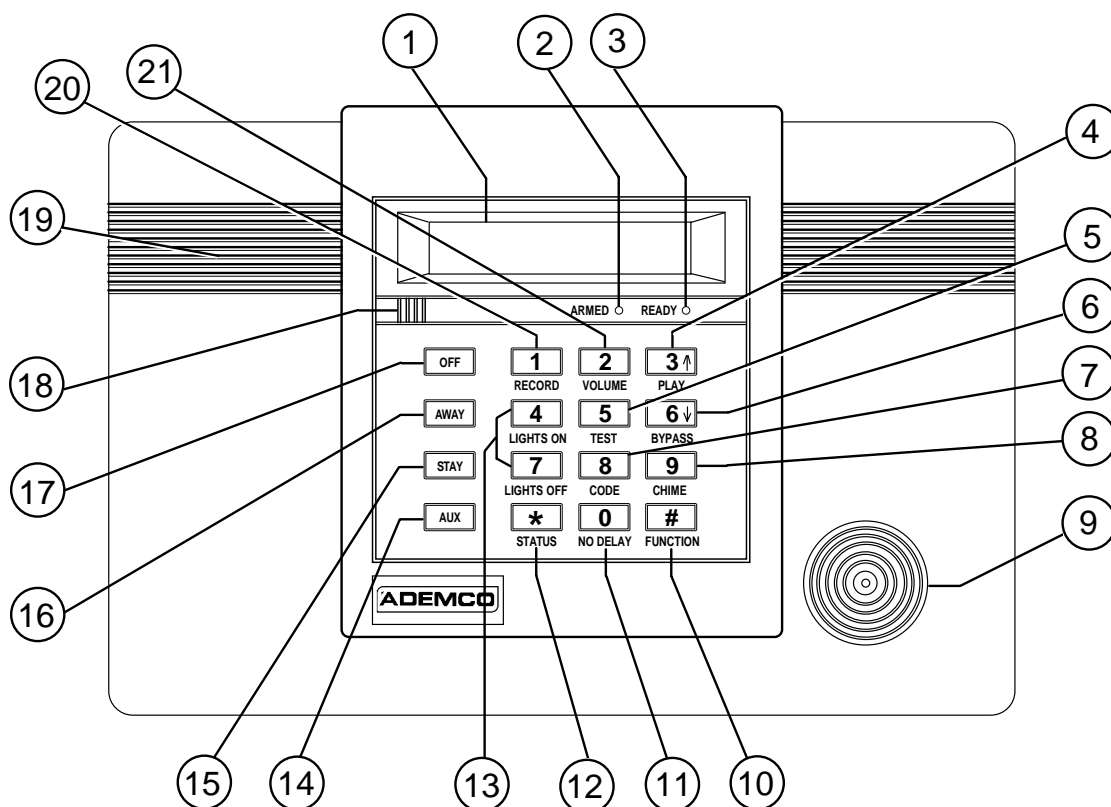
Master Keypad Definitions

NOTE: The system functions described below are for reference only, and require additional key entries to activate.

1. **DISPLAY WINDOW:** Liquid Crystal Display (LCD). Displays protection point identification and system status, messages, and user instructions.
2. **ARMED INDICATOR:** (RED) Lit when the system has been armed (STAY, AWAY, NO DELAY). Blinks when armed and fault exists.
3. **READY INDICATOR:** When lit, indicates system is ready to be armed; blinking indicates system is not ready (a zone is open).
4. **PLAY KEY:** Announces a user's message if one was previously recorded. See RECORD function.
5. **TEST KEY:** Tests the system and alarm sounder.
6. **BYPASS KEY:** Removes individual protection zones from being monitored by the system. Displays currently bypassed zones.
7. **CODE KEY:** Allows entry of additional user codes that can be given to other system users.
8. **CHIME KEY:** Turns the Chime mode on and off. When on, any entry through a protected delay or perimeter zone while the system is disarmed will cause a tone to sound at the keypad(s).
9. **INTERNAL SOUNDER:** Source of alarm sounds (see "Summary of Audible Notifications" section).
10. **FUNCTION KEY:** Allows alternate key functions.
11. **NO DELAY KEY:** Used with STAY or AWAY function to eliminate the entry delay. Alarm sounds immediately if entry is opened.
12. **STATUS KEY:** When pressed prior to arming, the keypad will display all open zones, and will announce system status.
13. **LIGHTS ON / LIGHTS OFF KEYS:** Turns lights or other devices on or off, if programmed by the installer.
14. **AUX KEY:** Can be programmed to either perform a predefined function or to send a preset message to a pager.
15. **STAY KEY:** Arms the perimeter burglary protection, guarding protected doors, windows and other perimeter protection points, and sounds an alarm if one is opened. Interior protection is not armed, which allows movement within your house without causing an alarm. Entrance can be made through an entry delay zone without causing an alarm if the system is disarmed before the entry delay time expires.
16. **AWAY KEY:** Completely arms both perimeter and interior burglary protection for backup protection by sensing an intruder's movements through protected interior areas as well as guarding protected doors, windows, etc. Entrance can be made through an entry delay zone without causing an alarm if the system is disarmed before the entry delay time expires.
17. **OFF KEY:** Disarms the burglary portion of the system, silences alarms and audible trouble indicators, and clears alarm trouble display after the problem has been corrected.
18. **MICROPHONE:** Used to record personal messages up to 20 seconds long.
19. **SPEAKER:** Source of audible internal warning and confirmation sounds, status announcements, as well as alarms (see "Summary of Audible Notifications").
20. **RECORD:** Activates the recording function to record personal messages.
21. **VOLUME:** Sets the volume of system announcements and status beeps.
- **KEYS 0-9:** Used to enter your individual security access code(s).

SYSTEM OVERVIEW

Master Keypad Definitions



IMPORTANT!: When you use the keypad to enter codes and commands, press the keys within 2 seconds of one another. If 2 seconds elapse without a key depression, the entry is aborted and must be repeated from its beginning.

NOTE: Different timeouts may occur when defining auxiliary functions and setting the real-time clock.

SECURING THE PREMISES

Checking System Status

General Information

Before arming your system, all protected doors, windows, and other protection zones must be closed or bypassed (see the *BYPASSING PROTECTION* section). Pressing the **STATUS** key will announce all zones that are faulted, as well as any other abnormal system condition, making it easier for you to secure any open zones.

READY LIGHT: The green READY indicator on the keypad will be lit if the system is ready to be armed. If blinking, the system is not ready.

Press the **STATUS** Key

Press the **STATUS** key once to announce the general status of the system. The following phrases may be heard depending on the current state of the system:

disarmed, ready to arm [message]
disarmed [check system], [not ready to arm], [message]
armed [away] [stay] [instant] [check system]

NOTE: Phrases in brackets are variable, and are announced only if appropriate in the current state of the system

Press the **STATUS** key twice[†] to announce specific system status. The following phrases may be heard depending on the current state of the system:

fire alarm [zone voice descriptors]
alarm [zone voice descriptors]
fire fault [zone voice descriptors]
fault [zone voice descriptors]
system low battery
AC loss
zones bypassed
chime

[†] (second press must be within 5 seconds of first press)

VOLUME LEVEL: The volume level of system announcements can be increased or decreased. Refer to the *MESSAGE RECORDING/PLAYBACK* section for the procedure.

System Can Be Armed

The READY light will be lit when all protection zones have been either closed or bypassed. You may now arm the system as usual.

SECURING THE PREMISES

Arming the System

Arming in Stay Mode

Use this mode when you are staying home, but expect someone to use the entrance door later. Close all protected perimeter windows and doors before arming. The green READY indicator on the keypad should be lit if the system is ready to be armed.

To arm in STAY mode: + **STAY** OR press and hold **STAY** **
Your security code**

** See Quick Arming paragraph.

The keypad beeps three times and displays the armed STAY message. The red ARMED indicator lights and the system announces “*armed STAY–exit now.*”

When armed in STAY mode, the system will sound an alarm if a protected door or window is opened, but you may otherwise move freely throughout the premises. Late arrivals can enter through the entrance door without causing an alarm, but they must disarm the system within the entry delay period or an alarm will occur.

Restarting Exit Delay While System Armed

Ask your installer if this feature is active for your system. If active, you can restart the exit delay at any time after arming in STAY mode. This is useful if you wish to open the entry/exit door to let someone in after arming the system, and avoids having to disarm the system and then re-arm it again.

To restart exit delay while system is armed in STAY mode: Press **STAY** key

Arming In Away Mode

Use this mode when no one will be staying on the premises. Close all protected perimeter windows and doors before arming. The green READY indicator on the keypad should be lit if the system is ready to be armed.

To arm in AWAY mode: + **AWAY** OR press and hold **AWAY** **
Your security code**

** See Quick Arming paragraph.

The keypad beeps twice, or beeps continuously if exit warning has been programmed for your system, and displays the armed AWAY message. The red ARMED indicator lights and the system announces “*armed AWAY–exit now.*”

When armed in AWAY mode, the system will sound an alarm if a protected door or window is opened, or if any movement is detected inside the premises. You may leave through the entrance door during the exit delay period without causing an alarm. You may also re-enter through the entrance door, **but you must disarm the system within the entry delay period or an alarm will occur.**

SECURING THE PREMISES

Arming the System

Arming the System With No Delay

Use NO DELAY with STAY mode when you are staying home and do not expect anyone to use the entrance door.

Use NO DELAY with AWAY mode when the premises will be vacant for extended periods of time such as vacations, etc.

When armed with NO DELAY, the system will sound an alarm if a protected door or window is opened, including the entrance door. You may leave through the entrance door during the exit delay period without causing an alarm, but an alarm will sound as soon as someone reenters.

To arm with NO DELAY: + **AWAY** or **STAY** + **NO DELAY**

Your security code**

** See Quick Arming paragraph.

Quick Arming

If Quick Arm was programmed by the installer, **do not** enter the security code to **arm** the system. Instead, simply press and hold down the desired arming key for at least 2 seconds. The security code must always be used to **disarm** the system, however.

To arm if Quick Arm is active: **AWAY** or **STAY**

hold down for at least 2 seconds

To arm with NO DELAY if Quick Arm is active: **AWAY** or **STAY** then **NO DELAY**

hold down for at least 2 seconds

SECURING THE PREMISES

Entry/Exit Delays

Exit Delay

Exit delay begins immediately after arming the system, and gives you time to leave through the designated exit door without setting off an alarm. A slow beeping will sound throughout the exit delay period, if programmed.

Exit Alarms

Exit Alarm Active

To minimize false alarms sent to the alarm monitoring company, your system may have been programmed for this feature. Ask your installer if Exit Alarm is active for your system.

Whenever you arm the system, the exit delay begins. If an entry/exit door or interior zone is faulted when the exit delay ends (e.g., exit door left open), the system sounds an alarm and starts the entry delay timer. If you disarm the system before the entry delay ends, the alarm sound stops and the message "CA" is displayed on the keypad, along with a zone number indicating the faulted zone. No message is sent to the alarm monitoring company. To clear the exit alarm condition, the open zone must be made re-secured; to clear the display, enter your code plus OFF.

If you do not disarm the system before the entry delay ends, and an entry/exit door or interior zone is still open, the alarm sound continues and an "exit alarm" message is sent to the alarm monitoring company. The message "EA" is displayed on the keypad, along with a zone number indicating the faulted zone. To stop the alarm, the system must be disarmed (your code plus OFF); to clear the display, enter your code plus OFF a second time. An exit alarm also results if an entry/exit door or interior zone is faulted within two minutes after the end of the exit delay.

Entry Delay

Entry Delays give you time to disarm the system when you re-enter through the designated entrance door. You must disarm the system before the entry delay period ends, or an alarm will occur. The keypad beeps during the entry delay period, reminding you to disarm the system. There are two entry delays (if programmed). The first is for your primary entrance and the second can be used for a secondary entrance, where a longer delay is required to walk to the keypad to disarm the system.

You can also arm the system with no entry delay at all by using the **NO DELAY** key when arming. This can provide greater security while on the premises or while away for extended periods of time. See *ARMING THE SYSTEM* section for procedure.

See your installer for delay times programmed for your system.

Exit Delay: seconds

Entry Delay 1: seconds

Entry Delay 2: seconds

SECURING THE PREMISES

Disarming the System

Use the **OFF** key to disarm the system and to silence alarm and trouble sounds. See the *SUMMARY OF AUDIBLE NOTIFICATION* section for information which will help you to distinguish between fire and burglary alarm sounds.

IMPORTANT: If you return and the main burglary sounder is on, DO NOT enter the premises, but call the police from a nearby safe location. If you return after an alarm has occurred and the main sounder has shut itself off, the keypad will beep rapidly upon entering, indicating that an alarm has occurred during your absence and an intruder may still be on the premises. LEAVE IMMEDIATELY and CONTACT THE POLICE from a nearby safe location.

To disarm the system and silence burglary alarms: + **OFF**
Your security code

The READY light will light (if no alarms have occurred while armed) and the keypad will beep once to confirm that the system is disarmed.

Memory of Alarm

If an alarm occurs, the keypad displays the zone number (s) that caused the alarm and the type of alarm (e.g., "FIRE ALARM"). These messages remain displayed until cleared by a user.

To clear the display, note the zone number displayed and enter an OFF sequence (enter your security code and press the **OFF** key).

If the READY light is blinking, go to the displayed zone and correct the fault (close windows, etc.). If the fault cannot be corrected, notify your alarm company.

SECURING THE PREMISES

Bypassing Protection Zones

Bypassing Individual Zones

Use the **[BYPASS]** key when you want to arm your system with one or more zones intentionally unprotected. Bypassed zones are unprotected and will not cause an alarm when violated while your system is armed. **All bypasses are removed when an OFF sequence (security code plus OFF) is performed.** Bypasses are also removed if the arming procedure that follows the bypass command is not successful.

The system will not allow fire zones to be bypassed.

The system must be disarmed first.

To bypass a zone(s): + **[BYPASS]** + 2-digit zone number(s)
Your security code for zone(s) to be bypassed
(e.g., 01, 02, 03, etc.)

Important! All single-digit numbers must be preceded by a zero (for example, enter 01 for zone 1).

The keypad will display the word “BYPASS” along with each bypassed zone number. Wait for these zones to be displayed, to be sure that intended zones are bypassed.

Arm the system as usual when the keypad displays the READY LED on steady.

Quick Bypass

Your system may allow you to easily bypass all open (faulted) zones without having to enter zone numbers individually. Ask your installer if this feature is active.

To bypass a zone(s): + **[BYPASS]** + WAIT
Your security code

In a few moments, all open zones will be displayed along with the word “BYPASS.” Wait for these zones to be displayed before arming. Arming the system before zones are displayed eliminates all bypasses.

Arm the system as usual when the keypad displays the READY LED on steady.

Displaying Bypassed Zones

The system allows you to determine what zones have been previously bypassed. Bypassed zones can be displayed only when the system is disarmed, and when the “BYPASS” message described above is displayed.

To display bypassed zone(s): + **[BYPASS]** + WAIT
Your security code

In a few moments, all open zones will be sequentially displayed along with the word “BYPASS.”

SECURING THE PREMISES

Panic Keys / Chime Mode

Panic Keys

Your system may have been programmed to use special keys to manually activate panic functions. The functions that might be programmed are listed below. See your installer for the function(s) that may have been programmed for your system.

Active Panic Functions

Your installer should note the functions that are active in your system.	Keys	Zone	Function
	1 and *	95	
	3 and #	96	
	* and #	99	

To use a paired key panic function, simply press both keys of the assigned pair at the same time. If your keypad has lettered keys for panic functions, press the designated key and hold down for at least 2 seconds to activate the panic function.

Types of Panic Alarms

A silent emergency sends an alarm signal to the alarm monitoring company,[†] but there will be no audible alarms or visual displays.

An audible emergency sends an emergency message to the alarm monitoring company[†] and sounds a loud, steady alarm at your keypad **and** at any external sounders that may be connected (“**ALARM**” plus a zone number are also displayed).

A personal emergency alarm sends an emergency message to the alarm monitoring company[†] and sounds at keypads, but not at external sounders. (“**ALARM**” plus a zone number are also displayed).

A fire alarm sends a fire alarm message to the alarm monitoring company[†] and uniquely activates keypad and any external sounders (“**FIRE ALARM**” plus a zone number are also displayed).

[†] If your system is connected to an alarm monitoring company

Chime Mode

Your system can be set to alert you to the opening of a door or window while it is disarmed by using CHIME mode. When activated, three beeps will sound at the keypad whenever a protected perimeter door is opened and the zone voice descriptor will be announced. Pressing the **STATUS** key will display the open protection points.

Note that the Chime mode can be turned on only when the system is disarmed.

To turn Chime mode on or off: **FUNCTION** + **CHIME**

The “CHIME” message displays while Chime mode is on, and disappears from the display when Chime mode is off.

USER FUNCTIONS

Paging Feature

Automatic Paging

If the Paging feature has been programmed for your system, your pager will respond to certain conditions as they occur in your system by displaying a message that indicates the type of condition that has occurred. The message appears in a 7-digit format explained below. The system can also be programmed to send up to 16 additional digits that will appear in front of the 7-digit message. These 16 digits may consist of a PIN number or special digits needed by the pager, account number, pauses, or any other special characters you may choose (for example, you may want to use a special character code to distinguish between security system messages and usual pager messages). See your installer if these additional characters are desired.

Code Format

The Pager Code takes the following form:

(AAAAAAAAAAAAAAAAAAAA) EEE-00NN

AAA... = Optional 16 digits, programmed by your installer.

EEE = 3-digit number describing the event that has occurred, as follows:

911 = Alarm (00NN following indicates the zone that caused the alarm)

101 = Open, system disarmed (00NN following indicates user number)

102 = Close, system armed (00NN following indicates user number)

811 = Trouble (00NN following indicates the zone that caused the trouble)

00NN = First two digits are always 00, followed by 2-digit user or zone number, depending on the type of event that occurred. If NN = 00, it can mean an AC loss has occurred, the system battery is low, or a 5827/5827BD wireless keypad battery is low. The Master Keypad will indicate the specific condition.

Examples:

Pager displays: 911-0004

This indicates your system is reporting an alarm (911) due to a fault on zone 4 (0004).

Pager displays: 101-0005

This indicates that your system is reporting an open/disarm (101) by user 5 (0005).

Manual Paging

In addition, your system may have been programmed to send a unique pager message when the AUX key is pressed (see *AUX FUNCTION* section for alternate function of this key). The actual message sent is 999-9999 (the hyphen may not appear, depending on your pager service). This code can be used to alert the person with the pager to whatever meaning you pre-arrange (e.g., "call home"). Ask your installer if this has been done for your system.

To manually send the pager message, if programmed: AUX (hold until 4 beeps sound)

USER FUNCTIONS

Using Device Commands

General Information

Your system may be set up so that certain lights or other devices can be turned on or off by using the device command from the keypad. Ask your installer if this has been done in your system. If programmed for your system, some devices may activate automatically upon certain system conditions. In this case, the following commands can be used to override the device activation. See your installer for a full explanation of this feature.

To activate devices 1-6: # + LIGHTS ON + device no. (2 beeps)

To deactivate devices 1-6: # + LIGHTS OFF + device no. (2 beeps)

To activate devices 7 & 8: + # + LIGHTS ON + device no.
Your security code (2 beeps)

To deactivate devices 7 & 8: + # + LIGHTS OFF + device no.
Your security code (2 beeps)

Device Descriptions

See your installer for device numbers assigned for your system.

Device	Description
1	
2	
3	
4	
5	
6	
7	
8	

USER FUNCTIONS

Message Recording/Playback

Your system allows you to record a brief message (up to 20 seconds) that can be played back later.

Recording a Message

To record a message: **[FUNCTION]** + **[RECORD]**

The keypad beeps and displays "REC MESSAGE." Begin speaking into the microphone to record a message up to 20 seconds long.

Note: The Record function can only be performed from the master keypad. It cannot be performed from any other wireless keypad (ex. 5827BD, 5827).

To stop recording before the end of 20 seconds: Press **[OFF]**

Otherwise, the recording automatically stops after 20 seconds, the keypad beeps twice, and the REC light turns off, indicating that recording has stopped. The MESSAGE light turns on, indicating a new message is in memory.

Message Playback

If the MESSAGE light is on, it indicates a new message is in memory.

To play back a message: **[FUNCTION]** + **[PLAY]**

Once the message is played, the MESSAGE light turns off.

Adjusting the Volume

To adjust message playback volume: **[FUNCTION]** + **[VOLUME]** + [3] or [6]

where: [3] = increase volume, [6] = decrease volume

Each entry increases (3) or decreases (6) the volume one level. The keys beep at the selected volume level when pressed.

This volume level is also the level at which system announcements and status beeps are made. You can mute system announcements if desired.

To mute system announcements: **[FUNCTION]** + **[VOLUME]** + **[OFF]**

When muted, no system announcements will be made. Recorded messages will be announced, though, when **[PLAY]** is pressed.

To restore announcement sounding: **[FUNCTION]** + **[VOLUME]** + [3] or [6]

Volume level will be restored to the level that was selected prior to muting the sound.

USER FUNCTIONS

AUX FUNCTION

General Information

The **AUX** key may have been programmed to either perform a predefined function or to send a preset message to a pager (see *PAGER FEATURE* section for pager operation). Ask your installer which function has been assigned for your system.

AUX Key: PRE-DEFINED FUNCTION PAGING FUNCTION

If programmed for the AUX function, you can use the **AUX** key to activate a string of up to 20 keystrokes that have been stored in the system's memory. Typical functions include:

- Seldom used but repeatable sequences
- Arming sequences that involve bypassing zones before arming
- Device activation sequences

Defining the AUX Function

The system must be disarmed before defining a function.

1. Enter Installer or Master Code + # + **AUX** (hold down until 4 beeps sound).
2. Press the desired command sequence, up to 20 keystrokes. Press the **AUX** key between each command in the ssequence.
3. Press the **AUX** key twice to end the definition.

For example, to bypass Zones 10 and 11 and arm AWAY with NO DELAY, enter the following string (after 4 beeps sound):

Master Code + # + **AUX (until 4 beeps sound), then 6 10 11 AUX AWAY 0 AUX AUX**

Note that the **AUX** key is included in the 20 keystroke maximum.

Performing the AUX function

Press and hold down the **AUX** key at least 2 seconds until 4 beeps sound, then enter your security code.

The defined function will begin.

USER FUNCTIONS

Clock/Calendar

Setting the Time and Date

Your system can display the current time (see your installer). The date is not displayed, but has an internal function. **The system must be disarmed with no faults present.**

To set the time and date: + [FUNCTION] + [63]
Master Code or Installer Code

Notes: The keypad beeps twice if invalid data entries (e.g., an hour greater than 12) are made, and the entry will not be accepted. The keypad beeps once for valid entries. Clock-Setting mode will automatically end if no keys are pressed for one minute.

Hour 12 : A (The current hour will be displayed with the AM/PM indication.)

Enter the 2-digit hour (i.e., 01-12).

Pressing [*] accepts the entry and continues to the AM/PM selection.

Pressing [#] exits Clock-Setting mode (keypad beeps 4 times).

AM/PM : P (The current AM/PM setting will display A or P.)

Enter 1 for PM or 0 for AM.

Pressing [*] accepts the entry and continues to the minute selection.

Pressing [#] returns to hour-setting prompt.

Minute : 25 (The current minute will display.)

Enter the 2-digit minute (i.e., 00-59).

Pressing [*] accepts the entry and continues to the month selection.

Pressing [#] returns to AM/PM setting.

Month 01 (The current month will display.)

Enter the 2-digit month designation (i.e., 01-12).

Pressing [*] accepts the entry and continues to the day selection.

Pressing [#] returns to the minute setting.

Day 01 (The current day of the month will display.)

Enter the 2-digit day of the month (i.e., 01-31).

Pressing [*] accepts the entry and continues to the year setting.

Pressing [#] returns to the month setting.

Year 98 (The current year will display.)

Enter the last two digits of the year (i.e., 00-99).

Pressing [*] accepts the entry and exits Clock-Setting mode (keypad beeps 4 times).

Pressing [#] returns to the day setting.

FIRE ALARM SYSTEM

(If Installed)

General

Your fire alarm system (if installed) is active 24 hours a day, providing continuous protection. In the event of an emergency, the installed smoke and heat detectors will automatically activate your security system, triggering a loud, intermittent sound from the keypad. An intermittent sound will also be produced by optional exterior sounders. A “FIRE” message will appear at your keypad and remain on until you silence and clear the alarm display.

In Case of Fire

1. Should you become aware of a fire emergency *before* your detectors sense the problem, go to your nearest keypad and press the single panic key (or panic key pair) assigned as FIRE emergency (if programmed by the installer) and hold down for at least 2 seconds. The alarm will sound.
2. Evacuate all occupants from the premises.
3. If flames and/or smoke are present, leave the premises and notify your local Fire Department immediately.
4. If no flames or smoke are apparent, investigate the cause of the alarm. The zone descriptor of the zone(s) in an alarm condition will appear at the keypad.

Silencing a Fire Alarm

1. Silence the alarm by pressing the **CODE** + **OFF** key. To clear the alarm display, enter your code and press the **OFF** key again.
2. If the keypad indicates a trouble condition after the second OFF sequence, check that smoke detectors are not responding to smoke- or heat-producing objects in their vicinity. Should this be the case, eliminate the source of heat or smoke.
3. If this does not remedy the problem, there may still be smoke in the detector. Clear it by fanning the detector for about 30 seconds.
4. When the problem has been corrected, clear the display by entering your code and pressing the **OFF** key.

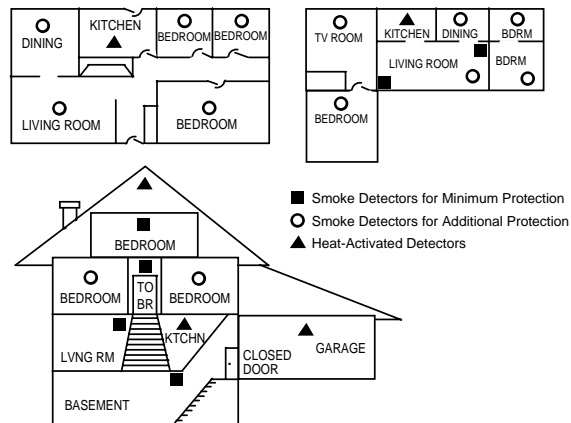
FIRE ALARM SYSTEM

National Fire Protection Assn./Smoke Detectors

With regard to the number and placement of smoke and heat detectors, we subscribe to the recommendations contained in the National Fire Protection Association's (NFPA) Standard #74 noted below.

Early warning fire detection is best achieved by the installation of fire detection equipment in all rooms and areas of the household as follows: A smoke detector installed outside of each separate sleeping area, in the immediate vicinity of the bedrooms and on each additional story of the family living unit, including basements and excluding crawl spaces and unfinished attics.

In addition, the NFPA recommends that you install heat or smoke detectors in the living room, dining room, bedroom(s), kitchen, hallway(s), attic, furnace room, utility and storage rooms, basements and attached garages.

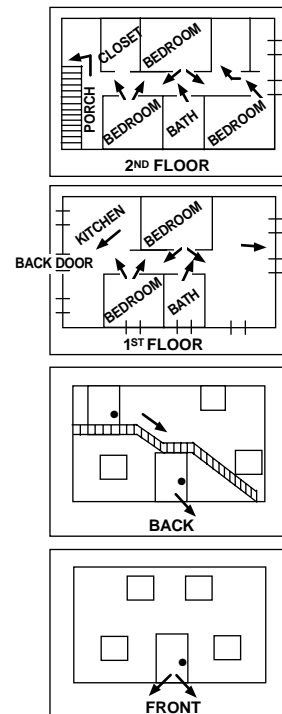


FIRE ALARM SYSTEM

Emergency Evacuation

Establish and regularly practice a plan of escape in the event of fire. The following steps are recommended by the National Fire Protection Association:

1. Position your detector or your interior and/or exterior sounders so that they can be heard by all occupants.
2. Determine two means of escape from each room. One path of escape should lead to the door that permits normal exit from the building. The other should be an alternative escape, such as a window, should your path to that door be unpassable. Station an escape ladder at such windows if there is a long drop to the ground.
3. Sketch a floor plan of the building. Show windows, doors, stairs and rooftops that can be used to escape. Indicate escape routes for each room. Keep these routes free from obstruction and post copies of the escape routes in every room.
4. Assure that all bedroom doors are shut while you are asleep. This will prevent deadly smoke from entering while you escape.
5. Try the door. If the door is hot, check your alternate escape route. If the door is cool, open it cautiously. Be prepared to slam the door if smoke or heat rushes in.
6. When smoke is present, crawl on the ground. Do not walk upright, since smoke rises and may overcome you. Clearer air is near the floor.
7. Escape quickly; don't panic.
8. Establish a place outdoors, away from your house, where everyone can meet and then take steps to contact the authorities and account for those missing. Choose someone to assure that nobody returns to the house — many die going back.



SYSTEM FUNCTIONS

Security Codes

General Information

For additional security, users other than you who do not need to know your code can be assigned different security codes. These secondary users are identified by "user numbers" when their codes are assigned. You can assign up to 6 user codes (2-digit user numbers 03-08). Note that the master (primary) user of the system is the only one who can assign codes to secondary users, and is designated user no. 02; user no. 01 is the installer's code.

All codes can be used interchangeably when performing system functions (a system armed with one user's code can be disarmed by another user's code), with the exception of the Babysitter Code described below.

Babysitter Code (User 07): This code can be used to arm the system, but cannot disarm the system **unless** the system was armed with this code. This code is typically assigned to someone (such as a babysitter) who needs to arm/disarm the system only at certain times. The Babysitter Code is assigned to User 07. The user of this code should **not** use the Quick Arm feature.

Duress Code (User 08): This feature is intended for use when you are forced to disarm or arm the system under threat. When used, the system will act normally, but can silently notify the alarm monitoring company of your situation, if that service has been provided. Duress Code is assigned to User 08.

The Duress Code is useful only when the system is connected to an alarm monitoring company.

To Add/Delete a User or Change a User's Code

Changing the Master Code

Follow the procedure for changing a user's code, but enter User No. 02 and enter the new code twice.

IMPORTANT: Temporary users of the system (e.g., babysitters, cleaning staff) should not be shown how to use any system function they do not need to know, such as bypassing protection zones for example.

Sequential key depressions for all steps in a procedure must be made within 2 seconds of one another, or else the entire entry is aborted and must be repeated from its beginning.

To add a user code: + **CODE** Key + user number (03-08) +
Master Code

To delete a user code: + **CODE** Key + user number (03-08)
Master Code

Wait (about 3 seconds) until the keypad beeps once before pressing any other key. The code is automatically deleted.

SYSTEM FUNCTIONS

Testing the System

(To be conducted weekly)

Entering Test Mode

The **TEST** key puts your system into the Test mode, which allows each protection point to be checked for proper operation. The keypad sounds a single beep every 40 seconds as a reminder that the system is in the Test mode.

Note: An alarm message will not be sent to your alarm monitoring company during the following tests.

Disarm the system and close all protected windows, doors, etc. The “READY” message should be displayed and the green READY indicator (if present on the keypad) should also be lit.

Enter the security code then press TEST

LISTEN. The external sounder should sound for 2 seconds and then turn off. If the sounder does not sound, **CALL FOR SERVICE IMMEDIATELY.**

FAULT ZONES. Open each protected door and window in turn and listen for three beeps from the keypad. Identification of each faulted protection point should appear on the display. The display will clear when the door or window is closed.

Walk in front of any interior motion detectors (if used) and listen for three beeps. The identification of the detector should appear on the display when it is activated. The display will clear when no motion is detected. Note that if wireless motion detectors are used, there is a 3-minute delay between activations. This is to conserve battery life.

To test all smoke detectors, follow the manufacturer's instructions. The identification of each detector should appear on the display when each is activated.

If a problem is experienced with any protection point (no confirming sounds, no display), **CALL FOR SERVICE IMMEDIATELY.**

When all protection points have been checked and are intact (closed), there should be no zone identification numbers displayed on the keypad.

Exit Test Mode

When testing is completed, exit the TEST mode by entering your security code and pressing the **OFF** key.

If the Test mode is inadvertently left active, it automatically turns off after 4 hours.

SYSTEM FUNCTIONS

Trouble Messages

Typical Trouble Condition Displays

To silence the beeping sound for fault conditions, press any key.

- FAULT** Indicates that a problem exists with the zone(s) displayed, accompanied by rapid beeping. First, determine if the zone(s) displayed are intact and make them so if they are not. If the zone uses a wireless detector, check that changes in the room (moving furniture, televisions, etc.) are not blocking wireless signals from the detector. If the problem has been corrected, the zone descriptor(s) and **FAULT** should disappear from the display. If not, key an OFF sequence (security code plus OFF) to clear the display. A fault condition can also indicate a wiring problem. If the "FAULT" display persists, CALL FOR SERVICE IMMEDIATELY. Note that the system will not allow arming if a fault condition exists. To arm the system with a fault condition present, you must first bypass the zone(s) having the fault condition.
- FC** Indicates that a failure has occurred in the telephone communication portion of your system. CALL FOR SERVICE IMMEDIATELY.
- CC** Indicates that the control is on-line with the central station's remote computer. The control will not operate while on-line. Wait a few minutes. The display should disappear.
- dI** If this remains displayed for more than 1 minute, the system is disabled. CALL FOR SERVICE IMMEDIATELY.
- LOW BAT** (no zone no.) Accompanied by a once-per-3 minutes beeping at the keypad, indicates that a low system battery condition exists. CALL FOR SERVICE IMMEDIATELY.
- LOW BAT** (with zone no.) Accompanied by a once-per-3 minutes beeping at the keypad, indicates that a low battery condition exists in the wireless transmitter displayed. CALL FOR SERVICE IMMEDIATELY.
- LOW BAT** (with zone 00) Accompanied by a once-per-3 minutes beeping at the keypad, indicates that a low battery condition exists in a wireless keypad. CALL FOR SERVICE IMMEDIATELY.

SYSTEM FUNCTIONS

Maintaining your system

The components of your security system are designed to be as maintenance-free as possible. However, to make sure that your system is in reliable working condition, do the following:

1. Test your system weekly.
2. Test your system after any alarm occurs (see the *TESTING THE SYSTEM* section).

Low Battery Conditions in Wireless Sensors

Each wireless sensor in your system has a 9-volt or 3-volt battery. The system detects low battery conditions in wireless sensors, including smoke detectors, personal emergency transmitter, and the portable wireless keypad, and displays a "LOW BATTERY" message on the master keypad. (A low battery in a wireless keypad is detected as soon as one of its keys is pressed, and the master keypad will display "00.") The master keypad will also beep, indicating a low battery condition. In addition, a battery-operated smoke detector with a low battery also emits a single "chirp" sound approximately once every 20–30 seconds, identifying itself as the smoke detector with the weak battery.

NOTE: The low battery message is a warning that battery replacement in the indicated sensor(s) is due within 30 days. In the meantime, a sensor causing a low battery indication is still fully operational.

Silencing Low Battery Warning Tones at the Keypad: You can silence the keypad's warning tones by pressing the **OFF** key, but the keypad's low battery message display will remain on as a reminder that you have a low battery condition in one or more of your sensors. When you replace the weak battery with a fresh one, the sensor will send a "good battery" signal to the control as soon as the sensor is activated (opening/closing of door, window, etc.), causing the "LOW BATTERY" display to turn off. If the sensor is not activated, the display will automatically clear within approximately 1 hour.

When replacing batteries, use only those recommended by your installer.

Alkaline batteries provide a minimum of 1 year of operation, and in most units and applications, provide 2–4 years of service. 3-volt lithium batteries may provide from 4-7 years of operation. Actual battery life will depend on the environment in which the sensor is used, the number of signals that the transmitter in the sensor has had to send, and the specific type of sensor. Factors such as humidity, high or low temperatures, and large swings in temperature may all lead to the reduction of actual battery life in an installation.

Routine Care

- Treat the components of your security system as you would any other electrical equipment. Do not slam sensor-protected doors or windows.
- Keep dust from accumulating on the keypad and all protective sensors, particularly on motion sensors and smoke detectors.
- The keypad and sensors should be cleaned carefully with a dry soft cloth. **Do not spray water or any other fluid on the units.**

Summary Of Audible Notification

** UPPER CASE indicates announcements after pressing **STATUS** once.

Lower case indicates announcements after pressing **STATUS** twice.

SOUND	CAUSE	DISPLAY	ANNOUNCEMENT**
LOUD, INTERRUPTED Keypad & External	FIRE ALARM	FIRE ALARM is displayed; zone number in alarm displayed.	fire alarm + zone voice descriptor
LOUD, CONTINUOUS Keypad & External	BURGLARY/AUDIBLE EMERGENCY ALARM	ALARM is displayed; zone number in alarm displayed.	alarm + zone voice descriptor
ONE SHORT BEEP (not repeated) Keypad only Keypad & External	a. SYSTEM DISARM b. SYSTEM ARMING ATTEMPT WITH AN OPEN ZONE. c. BYPASS VERIFY	a. Green LED on steady b. The number of the open protection zone is displayed after pressing STATUS . c. Numbers of the bypassed protection zones are displayed (One beep is heard for each zone displayed).	a. DISARMED–READY TO ARM b. DISARMED–NOT READY TO ARM c. zones bypassed
ONE SHORT BEEP (once every 3 min.) Keypad & External	a. SYSTEM IS IN TEST MODE b. LOW BATTERY AT A TRANSMITTER c. SYSTEM LOW BATTERY	a. Opened zone identifications will appear. b. LOW BAT displayed with zone number of transmitter. c. LOW BAT displayed with no zone no.	a. No announcement b. low battery + zone voice descriptor c. system low battery
TWO SHORT BEEPS Keypad & External	ARM AWAY OR MAXIMUM	AWAY or AWAY + INSTANT is displayed. Red ARMED indicator is lit.	ARMED AWAY [INSTANT] – EXIT NOW
THREE SHORT BEEPS Keypad & External	a. ARM STAY OR INSTANT b. ZONE OPENED WHILE SYSTEM IS IN CHIME MODE.	a. STAY or STAY + INSTANT is displayed. Red ARMED indicator is lit. b. CHIME displayed, number of open protection zone will be displayed if the Status key is pressed.	a. ARMED STAY [INSTANT] – EXIT NOW b. zone voice descriptor
RAPID BEEPING Keypad & External	a. TROUBLE b. MEMORY OF ALARM	a. FAULT displayed. Number of troubled protection zone is displayed. b. FIRE ALARM or ALARM is displayed; zone number in alarm is displayed.	a. fault + zone voice descriptor b. fire alarm or alarm + zone voice descriptor
SLOW BEEPING Keypad & External	a. ENTRY DELAY WARNING b. EXIT DELAY WARNING	a. Exceeding the delay time without disarming causes alarm. b. AWAY or AWAY + INSTANT is displayed	a. DISARM SYSTEM NOW b. ARMED [AWAY] [INSTANT] – EXIT NOW

Additional Announcements:

Pressing STATUS key once will announce the following primary messages, depending on the system's status at the time:

- Disarmed–Ready to Arm
- Disarmed [check system] [not ready to arm]
- Armed [away] [stay] [instant] [check system] [exit now]

Pressing the STATUS key twice will announce the following secondary messages, depending on the system's status at the time:

- Fire Alarm + zone voice descriptor
- Alarm + zone voice descriptor
- Fire Fault + zone voice descriptor
- Fault + zone voice descriptor
- System Low Battery
- AC Loss
- Zones Bypassed
- Chime

NOTE: If there are no secondary messages, the primary status messages will be announced.

UL NOTICE: This is a "Grade A" residential system.

FCC STATEMENT

FCC ID: CFS8DLLYNX

THIS DEVICE COMPLIES WITH PART 15 OF FCC RULES. OPERATION IS SUBJECT TO THE FOLLOWING TWO CONDITIONS: (1) THIS DEVICE MAY NOT CAUSE HARMFUL INTERFERENCE, AND (2) THIS DEVICE MUST ACCEPT ANY INTERFERENCE RECEIVED, INCLUDING INTERFERENCE THAT MAY CAUSE UNDESIRE OPERATION.

FEDERAL COMMUNICATIONS COMMISSION (FCC) Part 15 STATEMENT

This equipment has been tested to FCC requirements and has been found acceptable for use. The FCC requires the following statement for your information:

This equipment generates and uses radio frequency energy and if not installed and used properly, that is, in strict accordance with the manufacturer's instructions, may cause interference to radio and television reception. It has been type tested and found to comply with the limits for a Class B computing device in accordance with the specifications in Part 15 of FCC Rules, which are designed to provide reasonable protection against such interference in a residential installation. However, there is no guarantee that interference will not occur in a particular installation. If this equipment does cause interference to radio or television reception, which can be determined by turning the equipment off and on, the user is encouraged to try to correct the interference by one or more of the following measures:

- If using an indoor antenna, have a quality outdoor antenna installed.
- Reorient the receiving antenna until interference is reduced or eliminated.
- Move the receiver away from the control/communicator.
- Move the antenna leads away from any wire runs to the control/communicator.
- Plug the control/communicator into a different outlet so that it and the receiver are on different branch circuits.

If necessary, the user should consult the dealer or an experienced radio/television technician for additional suggestions.

The user or installer may find the following booklet prepared by the Federal Communications Commission helpful: "Interference Handbook". This booklet is available from the U.S. Government Printing Office, Washington, DC 20402.

The user shall not make any changes or modifications to the equipment unless authorized by the Installation Instructions or User's Manual. Unauthorized changes or modifications could void the user's authority to operate the equipment.

IN THE EVENT OF TELEPHONE OPERATIONAL PROBLEMS

In the event of telephone operational problems, disconnect the control by removing the plug from the RJ31X (CA38A in Canada) telephone wall jack. We recommend that your certified installer demonstrate disconnecting the phones on installation of the system. Do not disconnect the phone connection inside the control/communicator. Doing so will result in the loss of your phone lines. If the regular phone works correctly after the control/communicator has been disconnected from the phone lines, the control/communicator has a problem and should be returned for repair. If upon disconnection of the control/communicator, there is still a problem on the line, notify the telephone company that they have a problem and request prompt repair service. The user may not under any circumstances (in or out of warranty) attempt any service or repairs to the system. It must be returned to the factory or an authorized service agency for all repairs.

FEDERAL COMMUNICATIONS COMMISSION (FCC) Part 68 NOTICE

This equipment complies with Part 68 of the FCC rules. On the front cover of this equipment is a label that contains, among other information, the FCC registration number and ringer equivalence number (REN) for this equipment. If requested, this information must be provided to the telephone company.

This equipment uses the following jacks:

An RJ31X is used to connect this equipment to the telephone network.

The REN is used to determine the quantity of devices which may be connected to the telephone line. Excessive RENs on the telephone line may result in the devices not ringing in response to an incoming call. In most, but not all areas, the sum of the RENs should not exceed five (5.0). To be certain of the number of devices that may be connected to the line, as determined by the total RENs, contact the telephone company to determine the maximum REN for the calling area.

If this equipment causes harm to the telephone network, the telephone company will notify you in advance that temporary discontinuance of service may be required. If advance notice is not practical, the telephone company will notify the customer as soon as possible. Also, you will be advised of your right to file a complaint with the FCC if you believe necessary.

The telephone company may make changes in its facilities, equipment, operations, or procedures that could affect the operation of the equipment. If this happens, the telephone company will provide advance notice in order for you to make the necessary modifications in order to maintain uninterrupted service.

If trouble is experienced with this equipment, please contact the manufacturer for repair and warranty information. If the trouble is causing harm to the telephone network, the telephone company may request you remove the equipment from the network until the problem is resolved.

There are no user serviceable components in this product, and all necessary repairs must be made by the manufacturer. Other repair methods may invalidate the FCC registration on this product.

This equipment cannot be used on telephone company-provided coin service. Connection to Party Line Service is subject to state tariffs.

This equipment is hearing-aid compatible.

When programming or making test calls to an emergency number, briefly explain to the dispatcher the reason for the call. Perform such activities in the off-peak hours; such as early morning or late evening.

SERVICING INFORMATION

Your local ADEMCO dealer is the person best qualified to service your alarm system. Arranging some kind of regular service program with him is advisable.

Your local ADEMCO dealer is:

Name: _____

Address: _____

Phone: _____

CANADIAN DEPARTMENT OF COMMUNICATIONS (DOC) STATEMENT

NOTICE

The Canadian Department of Communications label identifies certified equipment. This certification means that the equipment meets certain telecommunications network protective, operational and safety requirements. The Department does not guarantee the equipment will operate to the user's satisfaction.

Before installing this equipment, users should ensure that it is permissible to be connected to the facilities of the local telecommunications company. The equipment must also be installed using an acceptable method of connection. In some cases, the company's inside wiring associated with a single line individual service may be extended by means of certified connector assembly (telephone extension cord). The customer should be aware that compliance with the above conditions may not prevent degradation of service in some situations.

Repairs to certified equipment should be made by an authorized Canadian maintenance facility designated by the supplier. Any repairs or alterations made by the user to this equipment, or equipment malfunctions, may give the telecommunications company cause to request the user to disconnect the equipment.

Users should ensure for their own protection that the electrical ground connections of the power utility, telephone lines and internal metallic water pipe system, if present, are connected together. This precaution may be particularly important in rural areas.

Caution: User should not attempt to make such connections themselves, but should contact the appropriate electric inspection authority, or electrician, as appropriate.

The Load Number (LN) assigned to each terminal device denotes the percentage of the total load to be connected to a telephone loop which is used by the device, to prevent overloading. The termination on a loop may consist of any combination of devices subject only to the requirement that the total of the Load Numbers of all the devices does not exceed 100.

AVIS

L'étiquette du ministère des Communications du Canada identifie le matériel homologué. Cette étiquette certifie que le matériel est conforme à certaines normes de protection, d'exploitation et de sécurité des réseaux de télécommunications. Le ministère n'assure toutefois pas que le matériel fonctionnera à la satisfaction de l'utilisateur.

Avant d'installer ce matériel, l'utilisateur doit s'assurer qu'il est permis de le raccorder aux installations de l'entreprise locale de télécommunications. Le matériel doit également être installé en suivant une méthode acceptée de raccordement. Dans certains cas, les fils intérieurs de l'entreprise utilisés pour un service individuel à la ligne unique peuvent être prolongés au moyen d'un dispositif homologué de raccordement (cordon prolongateur téléphonique interne). L'abonné ne doit pas oublier qu'il est possible que la conformité aux conditions énoncées ci-dessus n'empêche pas la dégradation du service dans certaines situations. Actuellement, les entreprises de télécommunications ne permettent pas que l'on raccorde leur matériel aux prises d'abonnés, sauf dans les cas précis prévus par les tarifs particuliers de ces entreprises.

Les réparations du matériel homologué doivent être effectuées par un centre d'entretien canadien autorisé désigné par le fournisseur. La compagnie de télécommunications peut demander à l'utilisateur de débrancher un appareil à la suite de réparations ou de modifications effectuées par l'utilisateur ou à cause de mauvais fonctionnement.

Pour sa propre protection, l'utilisateur doit s'assurer que tous les fils de mise en terre de la source d'énergie électrique, des lignes téléphoniques de réseau de conduites d'eau s'il y en a, soient raccordés ensemble. Cette précaution est particulièrement importante dans les régions rurales.

Avertissement: L'utilisateur ne doit pas tenter de faire ces raccordements lui-même; il doit avoir recours à un service d'inspection des installations électriques, ou à un électricien, selon le cas.

L'indice de charge (IC) assigné à chaque dispositif terminal pour éviter toute surcharge indique le pourcentage de la charge totale qui peut être raccordé à un circuit téléphonique bouclé utilisé par ce dispositif. La terminaison du circuit bouclé peut être constituée de n'importe quelle combinaison de dispositifs, pourvu que la somme des indices de charge de l'ensemble des dispositifs ne dépasse pas 100.

OWNER'S INSURANCE PREMIUM CREDIT REQUEST

This form should be completed and forwarded to your homeowner's insurance carrier for possible premium credit.

A. GENERAL INFORMATION:

Insured's Name and Address: _____

Insurance Company: _____ Policy No.: _____

ADEMCO's LYNX Other _____

Type of Alarm: Burglary Fire Both

Installed by: _____ Serviced by: _____

Name

Name

Address

Address

B. NOTIFIES (Insert B = Burglary, F = Fire)

Local Sounding Device _____ Police Dept. _____ Fire Dept. _____

Central Station Name: _____

Address: _____

Phone: _____

C. POWERED BY: A.C. With Rechargeable Power Supply

D. TESTING: Quarterly Monthly Weekly Other _____

continued on other side

OWNER'S INSURANCE PREMIUM CREDIT REQUEST (cont.)

E. SMOKE DETECTOR LOCATIONS

- | | | | |
|---------------------------------------|--------------------------------------|--------------------------------------|--------------------------------|
| <input type="checkbox"/> Furnace Room | <input type="checkbox"/> Kitchen | <input type="checkbox"/> Bedrooms | <input type="checkbox"/> Attic |
| <input type="checkbox"/> Basement | <input type="checkbox"/> Living Room | <input type="checkbox"/> Dining Room | <input type="checkbox"/> Hall |

F. BURGLARY DETECTING DEVICE LOCATIONS:

- | | | | |
|---|--|---|---|
| <input type="checkbox"/> Front Door | <input type="checkbox"/> Basement Door | <input type="checkbox"/> Rear Door | <input type="checkbox"/> All Exterior Doors |
| <input type="checkbox"/> 1st Floor Windows | <input type="checkbox"/> All Windows | <input type="checkbox"/> Interior Locations | |
| <input type="checkbox"/> All Accessible Openings, Including Skylights, Air Conditioners and Vents | | | |

G. ADDITIONAL PERTINENT INFORMATION:

Signature: _____ Date: _____

WARNING!
THE LIMITATIONS OF THIS ALARM SYSTEM

While this system is an advanced design security system, it does not offer guaranteed protection against burglary or fire or other emergency. Any alarm system, whether commercial or residential, is subject to compromise or failure to warn for a variety of reasons. For example:

- Intruders may gain access through unprotected openings or have the technical sophistication to bypass an alarm sensor or disconnect an alarm warning device.
- Intrusion detectors (e.g. passive infrared detectors), smoke detectors, and many other sensing devices will not work without power. Battery operated devices will not work without batteries, with dead batteries, or if the batteries are not put in properly. Devices powered solely by AC will not work if their AC power supply is cut off for any reason, however briefly.
- Signals sent by wireless transmitters may be blocked or reflected by metal before they reach the alarm receiver. Even if the signal path has been recently checked during a weekly test, blockage can occur if a metal object is moved into the path.
- A user may not be able to reach a panic or emergency button quickly enough.
- While smoke detectors have played a key role in reducing residential fire deaths in the United States, they may not activate or provide early warning for a variety of reasons in as many as 35% of all fires, according to data published by the Federal Emergency Management Agency. Some of the reasons smoke detectors used in conjunction with this System may not work are as follows. Smoke detectors may have been improperly installed and positioned. Smoke detectors may not sense fires that start where smoke cannot reach the detectors, such as in chimneys, in walls, or roofs, or on the other side of closed doors. Smoke detectors also may not sense a fire on another level of a residence or building. A second floor detector, for example, may not sense a first floor or basement fire. Moreover, smoke detectors have sensing limitations. No smoke detector can sense every kind of fire every time. In general, detectors may not always warn about fires caused by carelessness and safety hazards like smoking in bed, violent explosions, escaping gas, improper storage of flammable materials, overloaded electrical circuits, children playing with matches, or arson. Depending upon the nature of the fire and/or the locations of the smoke detectors, the detector, even if it operates as anticipated, may not provide sufficient warning to allow all occupants to escape in time to prevent injury or death.
- Passive Infrared Motion Detectors can only detect intrusion within the designed ranges as diagrammed in their installation manual. Passive Infrared Detectors do not provide volumetric area protection. They do create multiple beams of protection, and intrusion can only be detected in unobstructed areas covered by those beams. They cannot detect motion or intrusion that takes place behind walls, ceilings, floors, closed doors, glass partitions, glass doors, or windows. Mechanical tampering, masking, painting or spraying of any material on the mirrors, windows or any part of the optical system can reduce their detection ability. Passive Infrared Detectors sense changes in temperature; however, as the ambient temperature of protected area approaches the temperature range of 90° to 105°F, the detection performance can decrease.
- Alarm warning devices such as sirens, bells or horns may not alert people or wake up sleepers if they are located on the other side of closed or partly open doors. If warning devices sound on a different level of the residence from the bedrooms, then they are less likely to waken or alert people inside the bedrooms. Even persons who are awake may not hear the warning if the alarm is muffled from a stereo, radio, air conditioner or other appliance, or by passing traffic. Finally, alarm warning devices, however loud, may not warn hearing-impaired people or waken deep sleepers.
- Telephone lines needed to transmit alarm signals from a premises to a central monitoring station may be out of service or temporarily out of service. Telephone lines are also subject to compromise by sophisticated intruders.
- Even if the system responds to the emergency as intended, however, occupants may have insufficient time to protect themselves from the emergency situation. In the case of a monitored alarm system, authorities may not respond appropriately.
- This equipment, like other electrical devices, is subject to component failure. Even though this equipment is designed to last as long as 10 years, the electronic components could fail at any time.

The most common cause of an alarm system not functioning when an intrusion or fire occurs is inadequate maintenance. This alarm system should be tested weekly to make sure all sensors and transmitters are working properly.

Installing an alarm system may make one eligible for lower insurance rates, but an alarm system is not a substitute for insurance. Homeowners, property owners and renters should continue to act prudently in protecting themselves and continue to insure their lives and property.

We continue to develop new and improved protection devices. Users of alarm systems owe it to themselves and their loved ones to learn about these developments.

ADEMCO ONE YEAR LIMITED WARRANTY

Alarm Device Manufacturing Company, a Division of Pittway Corporation, and its divisions, subsidiaries and affiliates ("Seller"), 165 Eileen Way, Syosset, New York 11791, warrants its security equipment (the "product") to be free from defects in materials and workmanship for one year from date of original purchase, under normal use and service. Seller's obligation is limited to repairing or replacing, at its option, free of charge for parts, labor, or transportation, any product proven to be defective in materials or workmanship under normal use and service. Seller shall have no obligation under this warranty or otherwise if the product is altered or improperly repaired or serviced by anyone other than the Seller. In case of defect, contact the security professional who installed and maintains your security equipment or the Seller for product repair.

This one year Limited Warranty is in lieu of all other express warranties, obligations or liabilities. THERE ARE NO EXPRESS WARRANTIES, WHICH EXTEND BEYOND THE FACE HEREOF. ANY IMPLIED WARRANTIES, OBLIGATIONS OR LIABILITIES MADE BY SELLER IN CONNECTION WITH THIS PRODUCT, INCLUDING ANY IMPLIED WARRANTY OF MERCHANTABILITY, OR FITNESS FOR A PARTICULAR PURPOSE OR OTHERWISE, ARE LIMITED IN DURATION TO A PERIOD OF ONE YEAR FROM THE DATE OF ORIGINAL PURCHASE. ANY ACTION FOR BREACH OF ANY WARRANTY, INCLUDING BUT NOT LIMITED TO ANY IMPLIED WARRANTY OF MERCHANTABILITY, MUST BE BROUGHT WITHIN 12 MONTHS FROM DATE OF ORIGINAL PURCHASE. IN NO CASE SHALL SELLER BE LIABLE TO ANYONE FOR ANY CONSEQUENTIAL OR INCIDENTAL DAMAGES FOR BREACH OF THIS OR ANY OTHER WARRANTY, EXPRESS OR IMPLIED, OR UPON ANY OTHER BASIS OF LIABILITY WHATSOEVER, EVEN IF THE LOSS OR DAMAGE IS CAUSED BY THE SELLER'S OWN NEGLIGENCE OR FAULT. Some states do not allow limitation on how long an implied warranty lasts or the exclusion or limitation of incidental or consequential damages, so the above limitation or exclusion may not apply to you.

Seller does not represent that the product may not be compromised or circumvented; that the product will prevent any personal injury or property loss by burglary, robbery, fire or otherwise; or that the product will in all cases provide adequate warning or protection. Buyer understands that a properly installed and maintained alarm may only reduce the risk of a burglary, robbery, fire or other events occurring without providing an alarm, but it is not insurance or a guarantee that such will not occur or that there will be no personal injury or property loss as a result. CONSEQUENTLY, SELLER SHALL HAVE NO LIABILITY FOR ANY PERSONAL INJURY, PROPERTY DAMAGE OR OTHER LOSS BASED ON A CLAIM THE PRODUCT FAILED TO GIVE WARNING. HOWEVER, IF SELLER IS HELD LIABLE, WHETHER DIRECTLY OR INDIRECTLY, FOR ANY LOSS OR DAMAGE ARISING UNDER THIS LIMITED WARRANTY OR OTHERWISE, REGARDLESS OF CAUSE OR ORIGIN, SELLER'S MAXIMUM LIABILITY SHALL NOT IN ANY CASE EXCEED THE PURCHASE PRICE OF THE PRODUCT, WHICH SHALL BE THE COMPLETE AND EXCLUSIVE REMEDY AGAINST SELLER. This warranty gives you specific legal rights, and you may also have other rights which vary from state to state. No increase or alteration, written or verbal, to this warranty is authorized.

ADEMCO
GROUP

165 Eileen Way, Syosset, New York 11791
Copyright © 1998 PITTWAY CORPORATION

EN8891KŠ
N8891 4/98